

STATICO

Global Supplier of Static Control & Cleanroom Products

*541 Taylor Way, Unit #1 Way. San Carlos, CA 94070. USA. www.statico.com
Tel.: (650)592-4733. 1-800-261-4149. Fax.: 650-508-0761. sales@statico.com*

Product Information **Model S2333** **Wrist/Foot Strap Tester**



Description

Model S2333 is a Dual-Function precise tester designed to test standard single conductor wrist grounding strap assemblies and heel or toe grounders.

Features

- **Mode Selector Switch** on the front panel allows test mode selection
 - Wrist Strap **Push to the Right**
 - Foot Strap **Push to the Left**
- **4 Indicators**
 - Low Fail **Red LED (steady) & Audible Alarm**
 - Pass **Green LED (steady)**
 - High Fail **Red LED (steady) & Audible Alarm**
 - Low Battery **Yellow LED Blinking (set at 6.5V)**
- **Battery Compartment** **Sliding lid on the back**
- **Test Button** **Applies power to the unit when depressed.**
- **External Power Receptacle** **On the left side panel allows use of the (Optional) AC/DC Adapter (Input: 120VAC 60Hz, Output: 9VDC 100mA).**
- **Foot Plate Connection** **Through receptacle on the left side panel.**
- **Dimensions** **5-1/2"X3"X1-1/2"**
(145X80X35mm).

Specifications

A. Wrist Strap Test Mode

- * Test Range **750Kilohm – 10Megohm**
- * Accuracy **+/- 5%**
- * Power Source **One 9VDC Alkaline Battery, or An (OPTIONAL) adapter.**

B. Foot Strap Test Mode

- * Test Range **750Kilohm – 100Megohm**

*** Accuracy**
*** Power Source**

+/- 5%
One 9VDC Alkaline Battery, or
An (OPTIONAL) adapter.

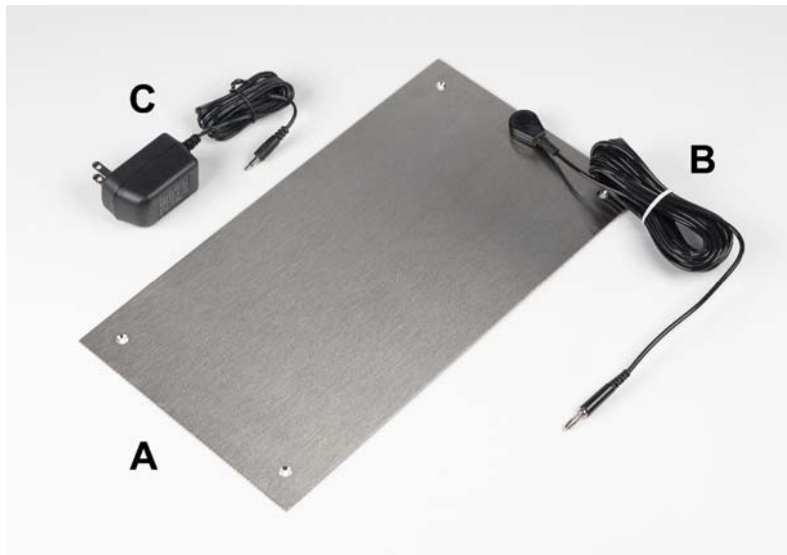
Part Numbers

S2333-TO
S2333-PC

Wrist/Foot Strap Tester Only
Wrist/Foot Strap Tester with
Foot Plate & the Connecting
Cord.

S2333-AD

Optional Adapter



A. Foot Plate
B. Connecting Cord
C. Optional Adapter