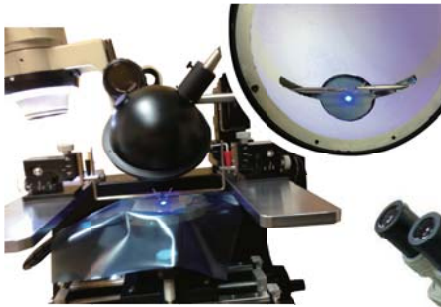
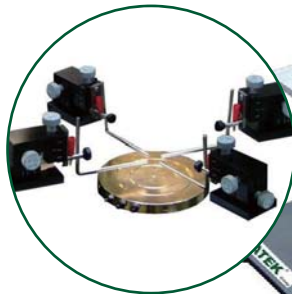


PG 101W Universal Analytical Probe Station



積分球特殊開孔實現
內置探針點測晶片全
角度收光

Application for LED chip
luminous flux testing



Feature

- Compact size, light weight, cost effective
- Different type of probe and chuck available for several applications
- Suitable for below 4" wafer
- R&D centre and university lab suitable

Application

- LED wafer & chip characterise
- LD/PD and other optical electronic device characterise
- Discrete device / MEMS semiconductor device characterise
- Other composite functional material / ceramic material / semiconductor material characterise

Specification

- | | |
|---|--|
| • 4" Ni coating metal chuck | • Microscope specification: |
| • 2"/3"/4" switchable vacuum lines | Eyepiece range: 20 |
| • X-Y travel range: 4" x 4" (10µm resolution) | Objective magnification: 0.67 ~ 4.5 |
| • Z lift travel range: 10mm | Min. view area: 2.7mm diameter |
| • Chuck Theta adjustable(option) | LED lighting |
| • Support 4 micropositioners as Max. | • Requirement: Power: AC 100~240V(50/60Hz) |
| • Size: 370mmWx370mmDx450mmH with Microscope | Vacuum: -250 mmHg, 7 liter/min |
| • Weight: 20kgs with Microscope | |

Standard accessories

- | | |
|--------------------------------------|--------------------|
| • Magnetic type Micropositioner 2 pc | • BeCu probe 10 pc |
|--------------------------------------|--------------------|

Optional accessories

- | | | |
|---------------------------------|--------------------------------|------------------------|
| • Gold coating metal chuck | • Measurement adapter | • Anti-vibration table |
| • High voltage probe/chuck | • Probe card holder/probe card | • Shielding box |
| • Low current/capacitance probe | • Hot chuck (Ambient ~200. C) | • Vacuum pump |