

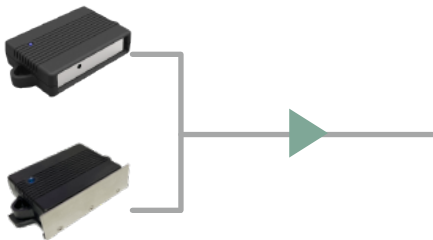
Qstream-FM

Field Meter Monitor System



Qstream-FM is an electrostatic voltage monitoring system. It uses a special electrostatic voltage sensor to provide an accurate value of the electrostatic voltage change during the EOS/ESD process through non-contact measurement. The sensor can be conveniently mounted inside the equipment by a combined fixture. Qstream host collects data through sensors and uploads the test results to the customer host system or its own software for display. Customers can touch the display screen to set the alarm threshold, and also can set the alarm and check the data report by software.

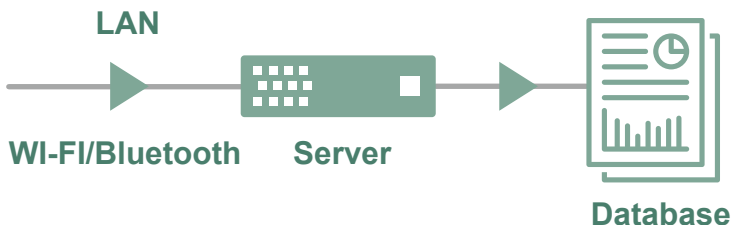
Field Meter Sensor



Ion balance test options
(Support two channels)

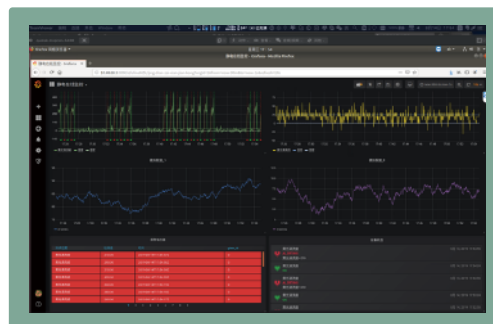


Qstream



Software

- Real-time display of ESD voltage waveform and data
- Automatic combination to send alarm report
- Supports CIM and MES positioning
- Secure data solution when the network is disconnected



Main Parameters

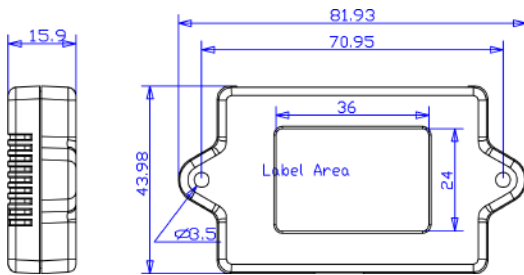
Optional model	One channel: Qstream-FM20K1 Two channel: Qstream-FM20K2
Measuring range	0~±20KV DC or AC peak
Measuring Accuracy	Better than 5% of the reading and 0.5% of the Full scale
Resolution	1V
Test distance	25mm for standard distance. It can be customized, please contact local sales
Zero control	Zero knob behind the Qstream for calibration and maintenance

Specification

Serial port and output port	LAN RJ45 / Analog signal / RS232 / SD Card	
Size	L125mm x W100mm x H143mm (Qstream) L82mm x W16mm x H44mm (Probe)	
Power	Voltage: 12V DC	Current: 1500mA
Display screen	4.3-inch LCD touch screen 800*480P	
Environmental Conditions	Temperature	15°C to 35°C
	Humidity	5% to 85%

PROBE

Probe Cable Length: 5 meters (16.4 ft), nominal. Can be extended, consult local sales for details



Probe Aperture



Ion balance test options

Model: Qstream-FM-IB

Measurement range: 0~±200V

Resolution: 1V

Accuracy: Better than ±5% of the reading

